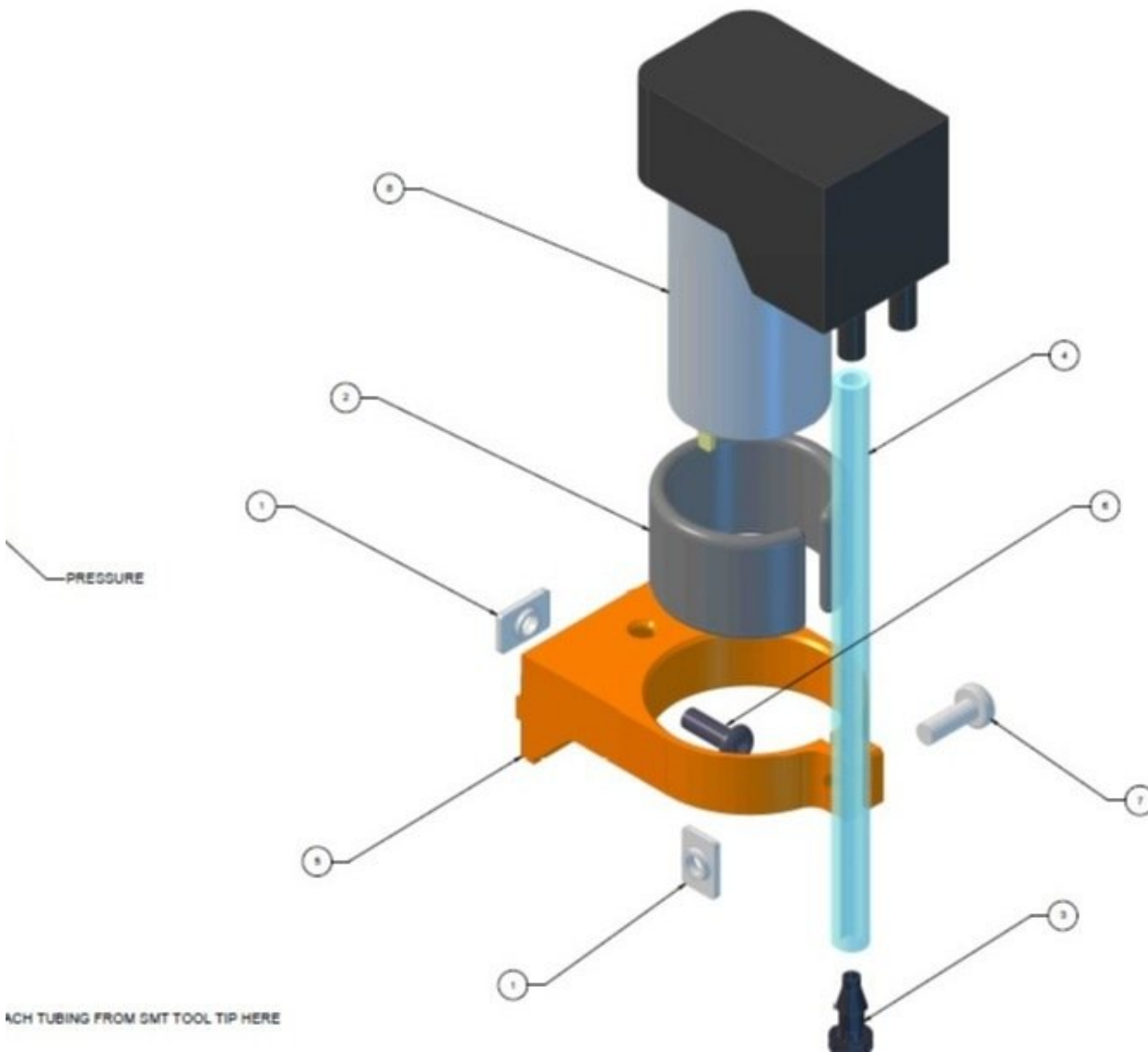


firepickdelta

Assembling the Vacuum Pump Mount

Written By: Neil Jansen



Step 1 — Gather parts



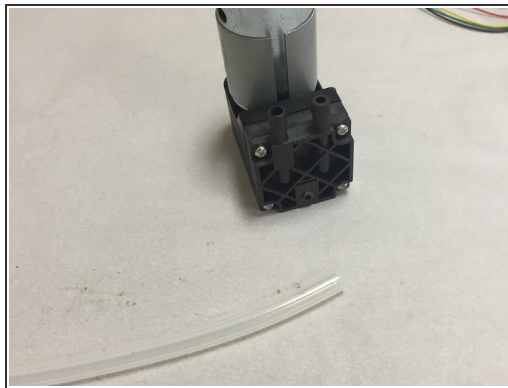
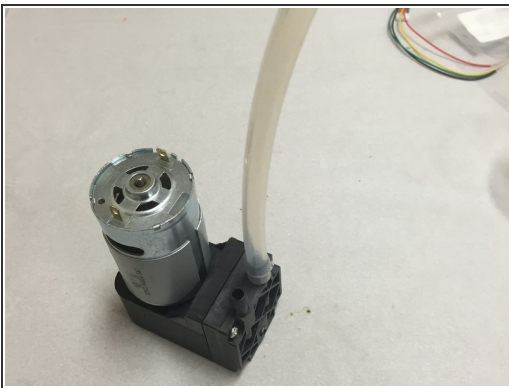
- Insert wisdom here.

Step 2 — Cut Small Piece of Silicone Tubing Off



- If you haven't already, cut a small ~14mm section of tubing off of the large tubing piece. It will be needed with the NEMA 8 SMT stepper motor.
- Put this small piece aside.

Step 3 — Connect Large Tubing to Pump



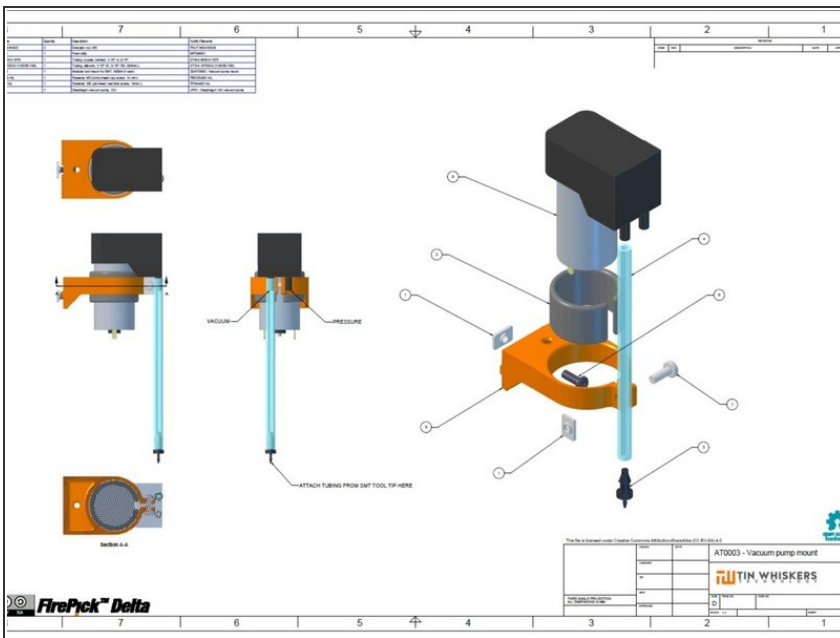
- Connect the large tubing to the vacuum side of the pump.

Step 4 — Insert DTB-0.0625-0.1875 into Large Silicone Tube



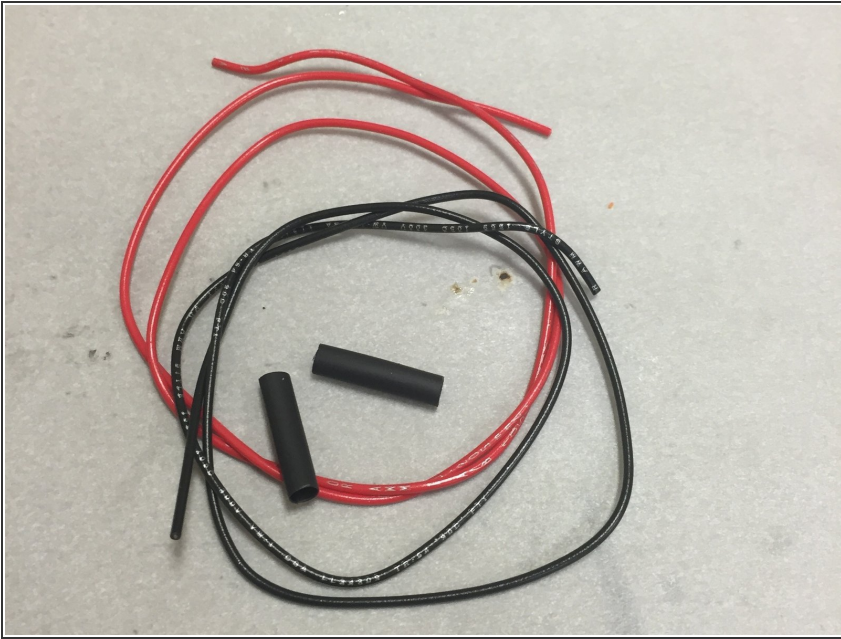
- Insert DTB-0.0625-0.1875 into Large Silicone Tube

Step 5 — Reference Exploded View Diagram



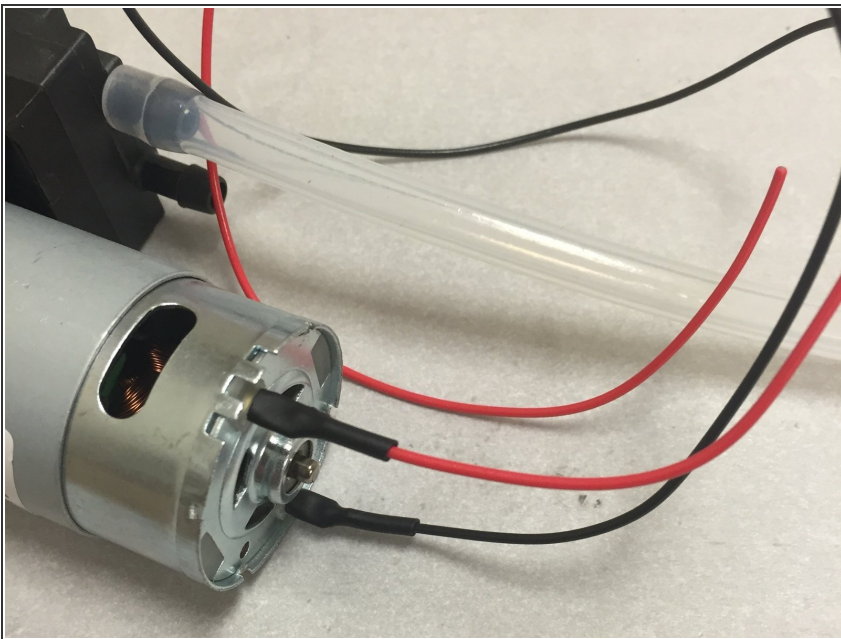
- Use PDF link here:
<https://drive.google.com/file/d/0B-U7icB...>

Step 6 — Locate the Wire, Heat Shrink Tubing



- Locate the two pieces of 14" (~350mm) wire. Do not use the 18" wire found in the same bag (that's used for the NEMA 8 stepper motor)
- Cut two pieces of 3/16" (~4.76mm) heat shrink tubing to ~15mm. These pieces were not included in the kit.

Step 7 — Solder to Vacuum Pump, Then Heat Shrink



- Solder the wires to the vacuum pump. Do this by stripping ~5-10mm of insulation off, and forming into a "hook" and threading this through the vacuum pump connections. Solder the connection and inspect the joint.
- Cover with the heat shrink tubing, and shrink with a heat gun.

Step 8 — All Done! (Mostly)



- If you haven't built [this part of the assembly](#) yet, do so now.
- Then, proceed toward the [Final Wiring guide](#) for this module.