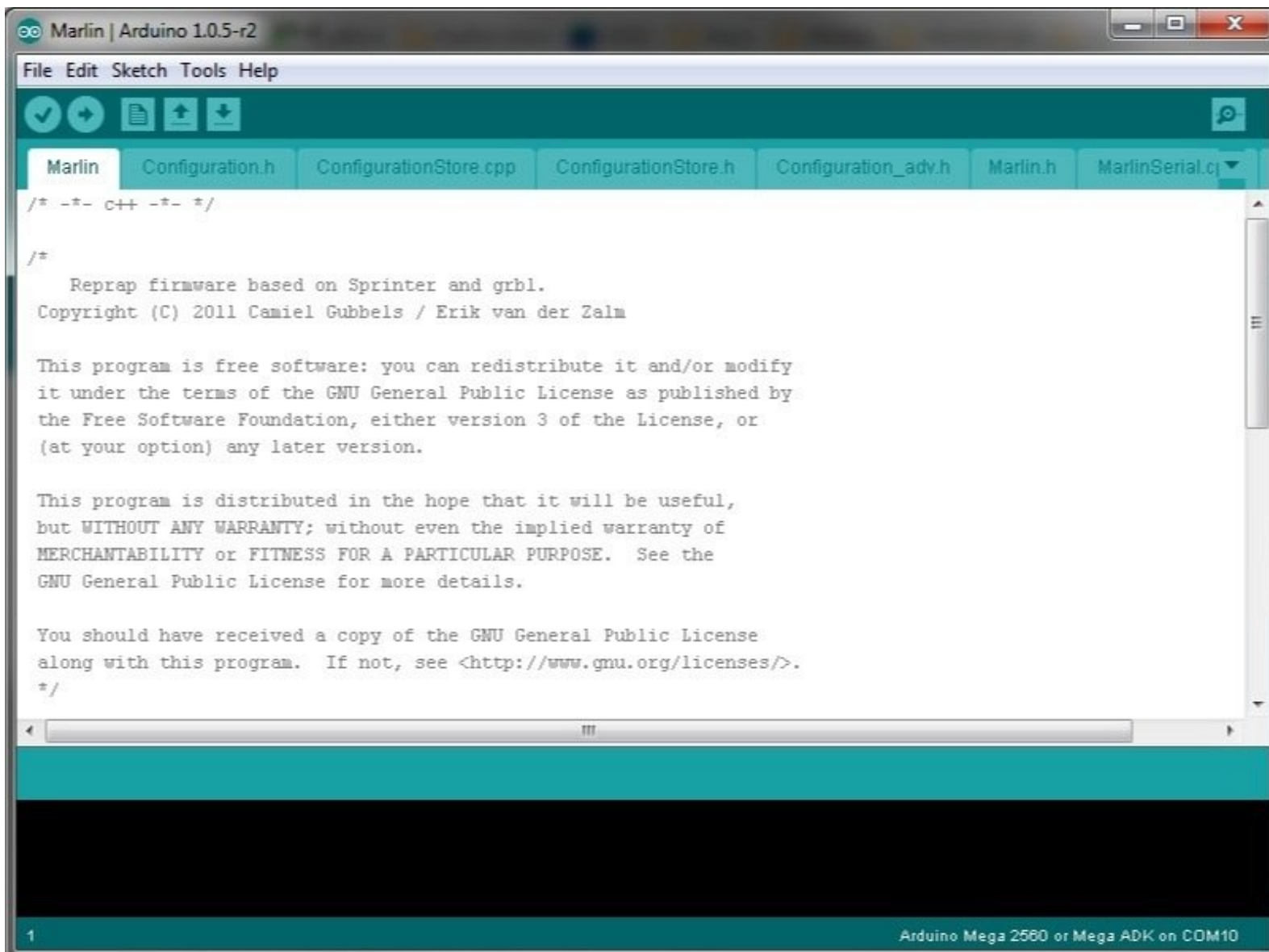


firepickdelta

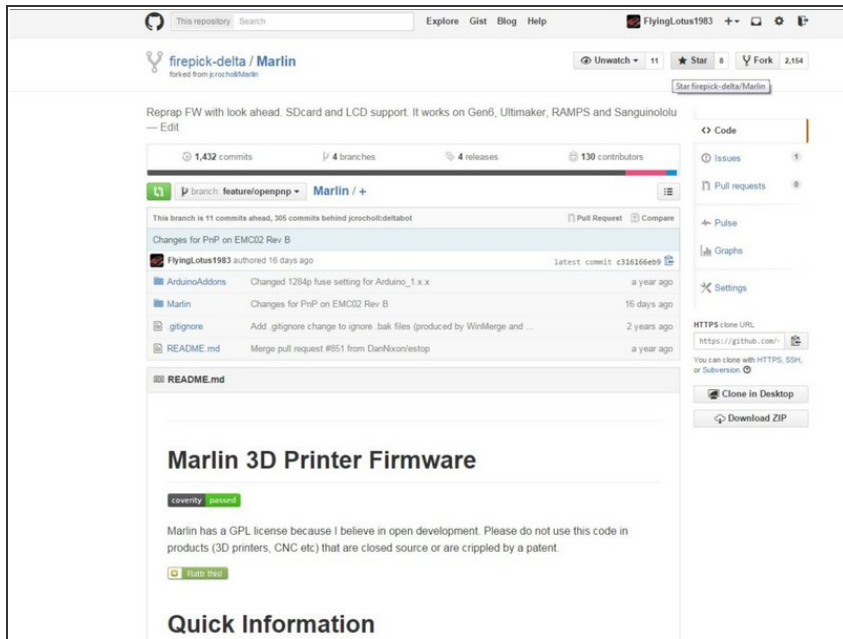
How to Upload Marlin to the Arduino Mega 2560

Written By: The Guru

A screenshot of the Arduino IDE interface. The title bar reads "Marlin | Arduino 1.0.5-r2". The menu bar includes "File", "Edit", "Sketch", "Tools", and "Help". The toolbar contains icons for opening, saving, and running. The file explorer shows several files: "Marlin", "Configuration.h", "ConfigurationStore.cpp", "ConfigurationStore.h", "Configuration_adv.h", "Marlin.h", and "MarlinSerial.c". The main text area displays the Marlin firmware's license and copyright information. The status bar at the bottom indicates "1" on the left and "Arduino Mega 2560 or Mega ADK on COM10" on the right.

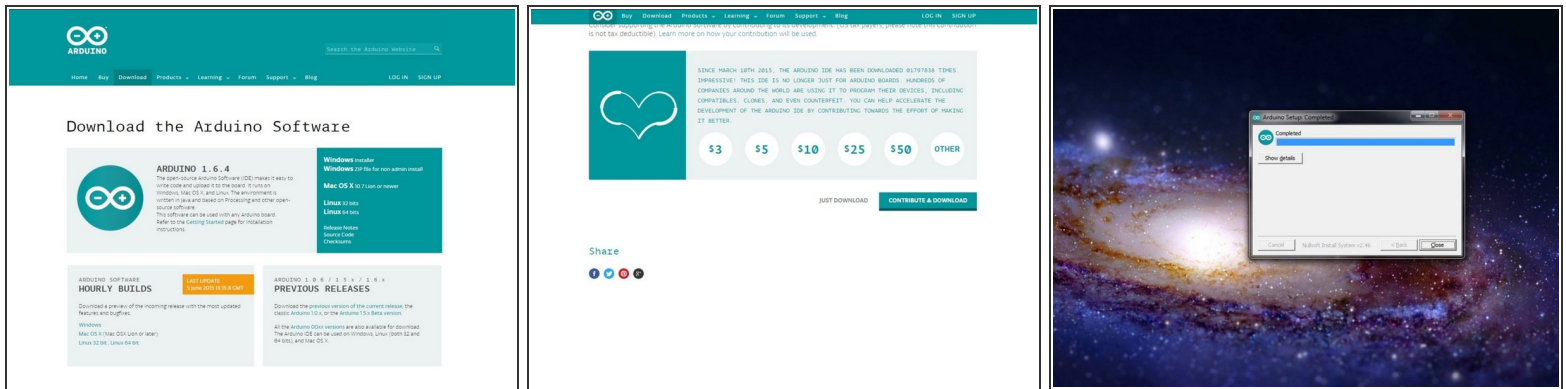
```
/* -*- c++ -*- */  
  
/*  
  Reprap firmware based on Sprinter and grbl.  
  Copyright (C) 2011 Camiel Gubbels / Erik van der Zalm  
  
  This program is free software: you can redistribute it and/or modify  
  it under the terms of the GNU General Public License as published by  
  the Free Software Foundation, either version 3 of the License, or  
  (at your option) any later version.  
  
  This program is distributed in the hope that it will be useful,  
  but WITHOUT ANY WARRANTY; without even the implied warranty of  
  MERCHANTABILITY or FITNESS FOR A PARTICULAR PURPOSE. See the  
  GNU General Public License for more details.  
  
  You should have received a copy of the GNU General Public License  
  along with this program. If not, see <http://www.gnu.org/licenses/>.  
  */
```

Step 1 — Get Marlin



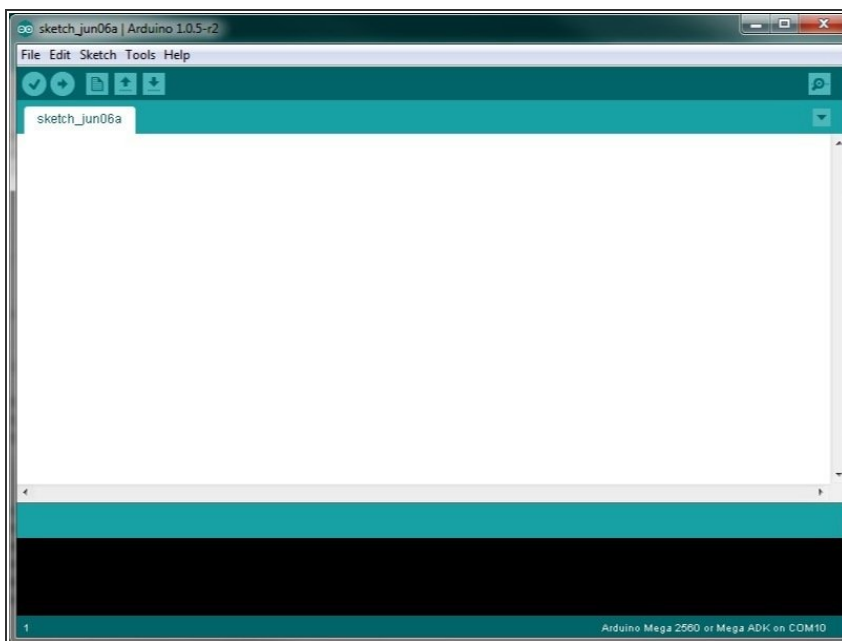
- Clone marlin software from delta github repository:
<https://github.com/firepick-delta/Marlin>
- Switch to the branch "feature/opennpnp"
- We HIGHLY recommend you use a Git client and learn to use it well, if you haven't already. This will allow you to sync latest changes, as this codebase is a living breathing project.
- If you would rather just download the ZIP to get going, you can do that, but staying up to date might get difficult later on. The URL of the ZIP file to download is:
<https://github.com/firepick-delta/Marlin...>

Step 2 — Download and Install Arduino IDE



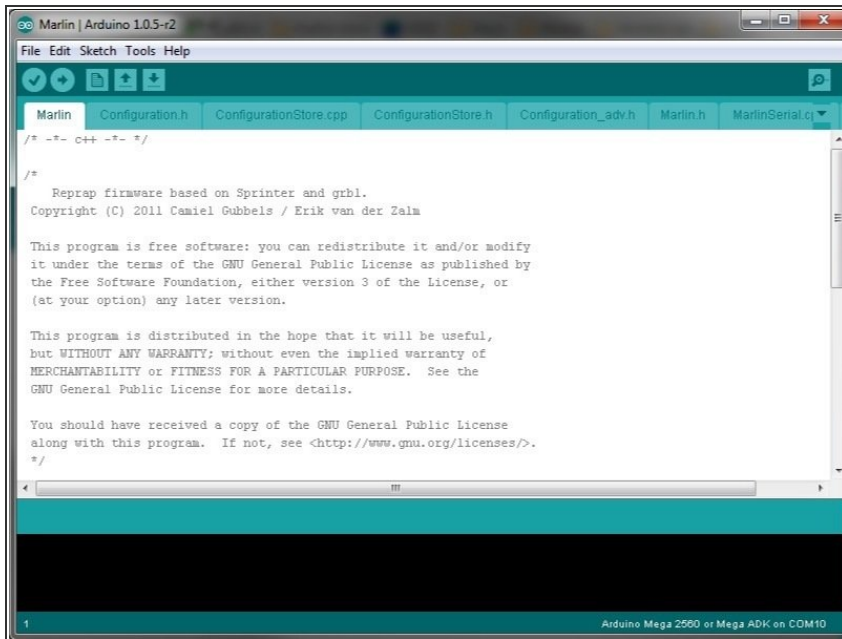
- Download the Arduino IDE: <http://www.arduino.cc/en/Main/Software>
- Do not use the arduino.org site; make sure to use arduino.cc
- Install the Arduino IDE after the download finishes. Make sure to install the drivers, if prompted.
- Feel free to donate a few \$\$ to the Arduino.cc project, as they're currently undergoing litigation with the evil arduino.org.

Step 3 — Launch Arduino IDE



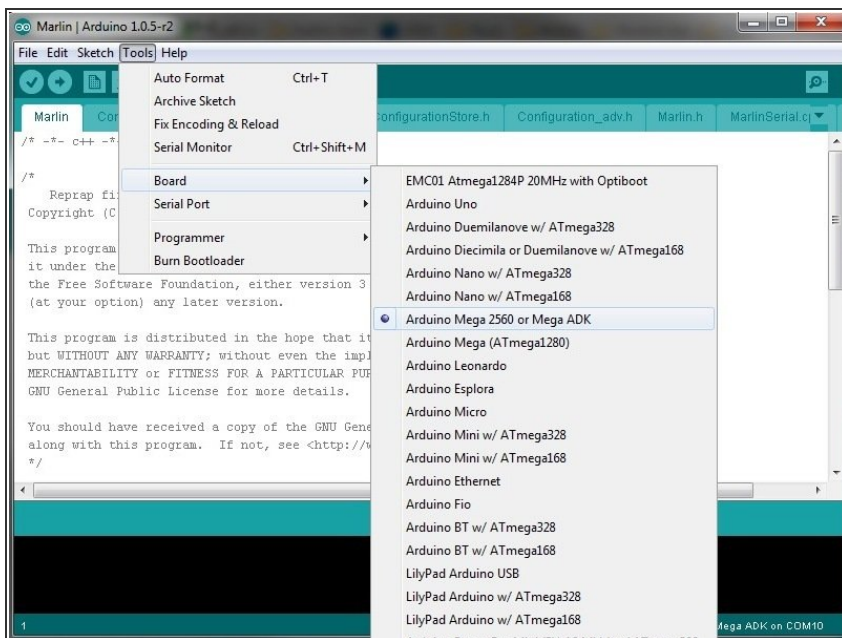
- Launch the Arduino IDE

Step 4 — Load Marlin code



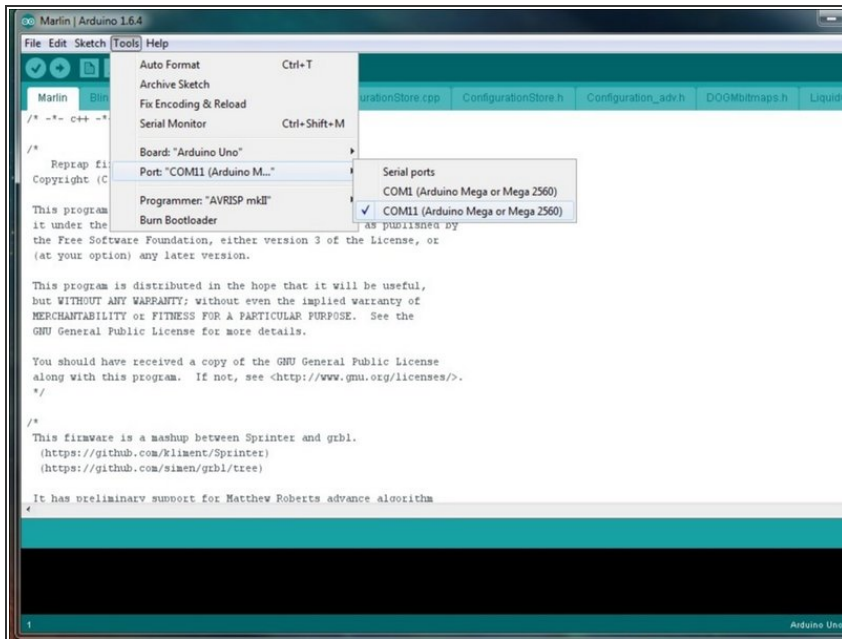
- File -> Open
- Navigate to location where you cloned Marlin
- Click "open"

Step 5 — Select Board Type



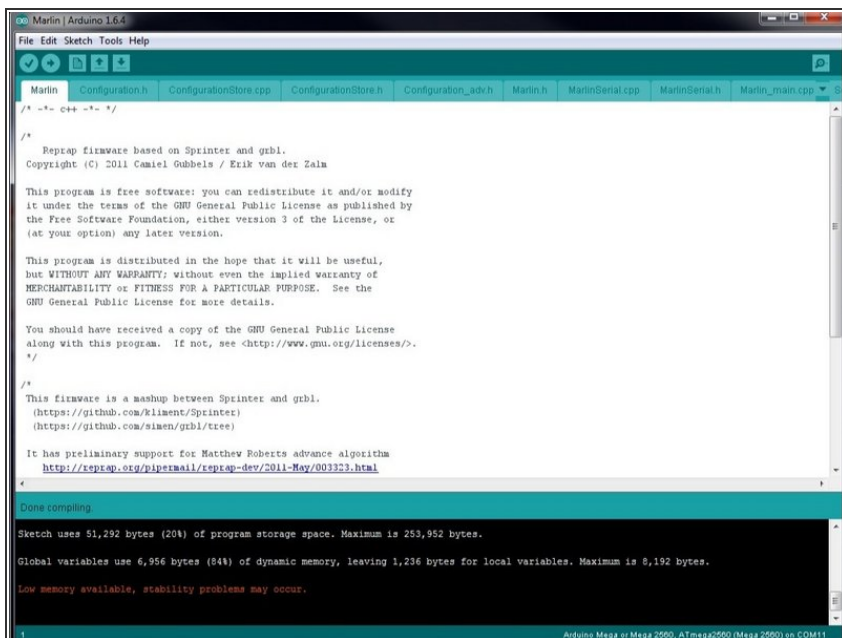
- Select board Tools -> Board -> Arduino Mega 2560

Step 6 — Select Serial Port



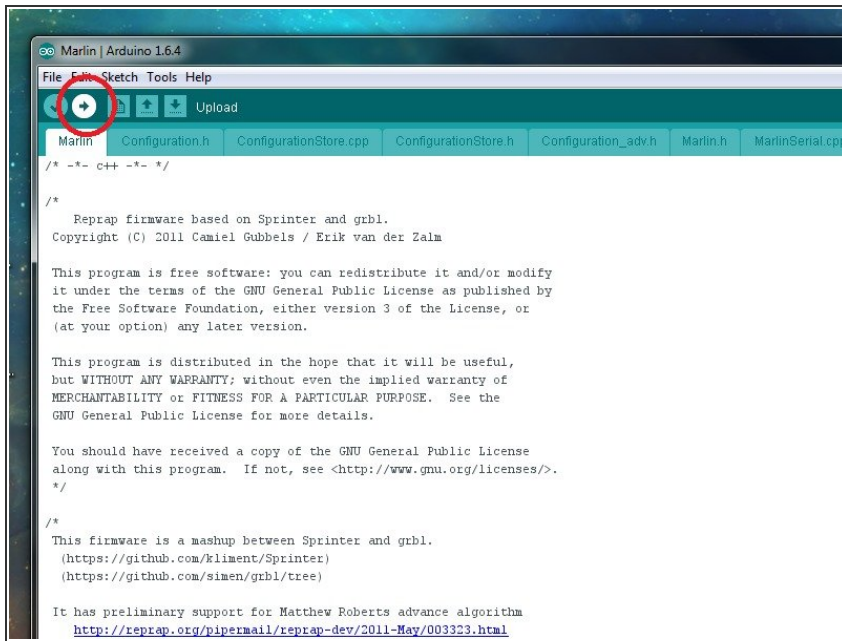
- Plug in your Arduino now.
- Select your arduino COM port.
- Tools -> Port -> COMxx

Step 7 — Compile code



- Sketch -> Verify/Compile
- NOTE: if there are errors, they need to be fixed before you can continue

Step 8 — Upload code



- Click the upload button (arrow on the tool bar)